

The sheet quality and superior flatness of Duets® Selects offers improved productivity with the advantage of single pass lasering or rotary engraving. A go-to solution for applications ranging from highly-detailed signage and wayfinding applications, to name badges, industrial applications and awards. Available in both non-glare matte or satin/brushed finishes to deliver the look you want with the speed you need.



Only the highest quality product leaves our plant. We manufacture Duets in our state-of-the-art cleanroom facility located in Cannon Falls, Minnesota allowing us to offer you a better product:

- Dust-free materials
- Tightly-controlled color and finish uniformity
- Consistently the flattest material

We stand behind everything that leaves our plant. And while it's our name on the materials, we know it's your name on the final product. That's a responsibility we don't take lightly.



APPLICATIONS

- Architectural Signage
- Egress / Exit Signage
- Exterior Signage
- Interior Signage
- Industrial Signage
- Personal Identification
- Safety Signage
- Trophies, Awards & Plaques
- Wayfinding

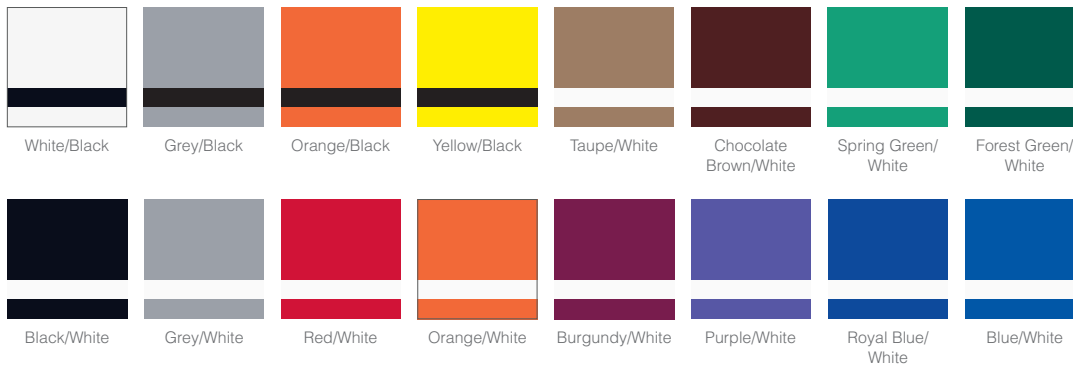
CHARACTERISTICS

- Front Engravable
- Outdoor / Indoor
- UV Stable
- UV Printable

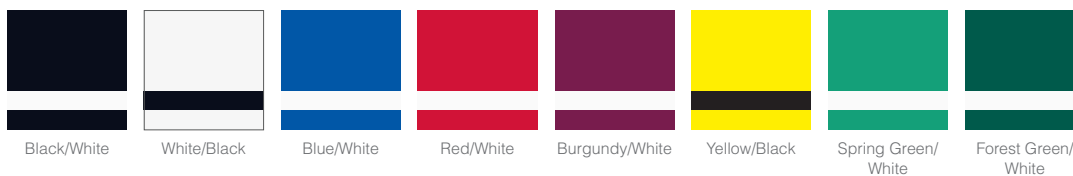
SPECIFICATIONS

Material	Impact Modified Acrylic
Finish	Microsurfaced (non-glare) Matte & Satin/brushed
Thicknesses	2-ply: 1/16" (1.6mm)
Engraving Methods	Laser (Single Pass) or Rotary
Engraving Depths	.003" (0.08mm)
Sheet Sizes	Standard: 24" x 49" (610mm x 1244mm) Half: 24" x 24" (610mm x 610mm) Quarter: 12" x 24" (305mm x 610mm)
Sizes are approximate.	

MATTE FINISH



SATIN/BRUSH FINISH



NOTE: Colors portrayed and/or color formulas expressed herein are for reference only. Duets materials are tightly controlled for color consistency during manufacturing, but the colors in printed, electronic or online representations may vary from actual material colors. We recommend requesting a free color chip or referring to the Duets color swatch binder to validate material colors.