

Make a powerful impression with design-forward interior or exterior signage. Quality substrates for fine engraving, yet durable enough to resist the ravages of weather and sun. Duets Laser XT is available in three thicknesses. Several colors come in a two-sided, 3-ply option.



Only the highest quality product leaves our plant. We manufacture Duets in our state-of-the-art cleanroom facility located in Cannon Falls, Minnesota allowing us to offer you a better product:

- Dust-free materials
- Tightly-controlled color and finish uniformity
- Consistently the flattest material

We stand behind everything that leaves our plant. And while it's our name on the materials, we know it's your name on the final product. That's a responsibility we don't take lightly.

APPLICATIONS

- Architectural Signage
- Egress / Exit Signage
- Exterior Signage
- Interior Signage
- Industrial Signage
- Personal Identification
- Safety Signage
- Trophies, Awards & Plaques
- Wayfinding

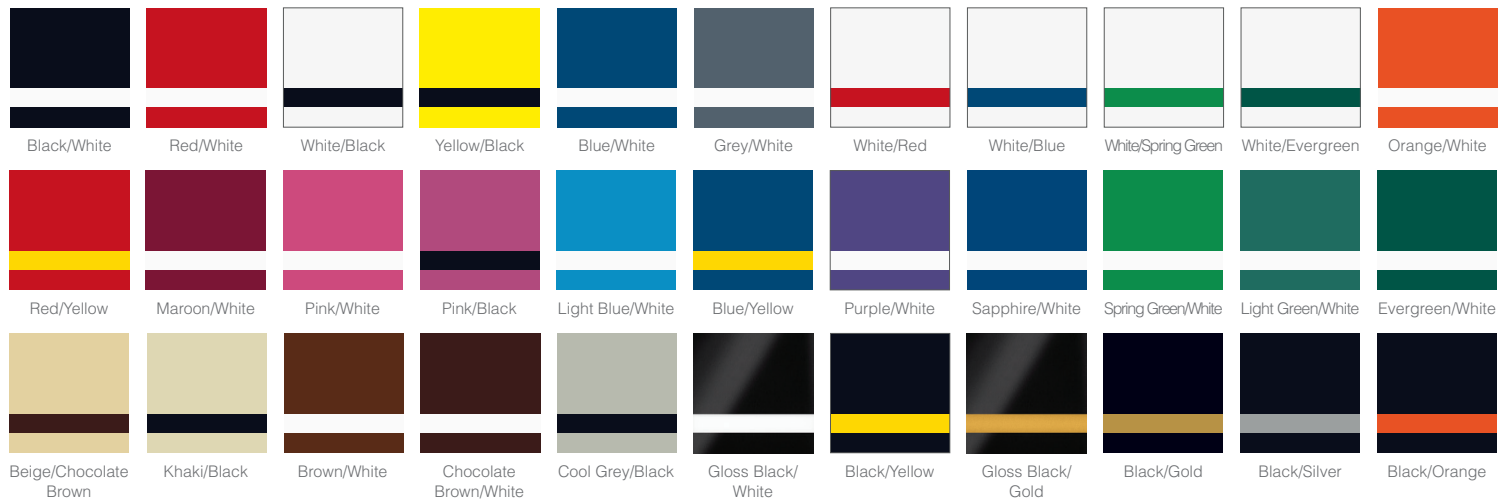
CHARACTERISTICS

- Front Engravable
- Outdoor / Indoor
- UV Stable
- UV Printable

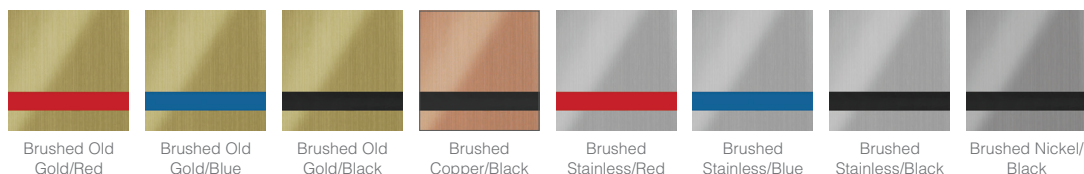
SPECIFICATIONS

| | |
|--------------------------|---|
| Material | Microsurfaced Impact Modified Acrylic |
| Finish | Matte (non-glare), Gloss, Brushed Metal, or Dura-Guard on most |
| Thicknesses | 2-ply: 1/32" (0.8mm) 2-ply: 1/16" (1.6mm) 2-ply or 3-ply: 1/8" (3.2mm) All colors are not offered in all thicknesses. |
| Engraving Methods | Laser or Rotary |
| Engraving Depth | .003" (0.08mm) |
| Sheet Sizes | Standard: 24" x 49" (610mm x 1244mm) Half: 24" x 24" (610mm x 610mm) Quarter: 12" x 24" (305mm x 610mm) Sizes are approximate. |

COLORS



METALS



NOTE: Colors portrayed and/or color formulas expressed herein are for reference only. Duets materials are tightly controlled for color consistency during manufacturing, but the colors in printed, electronic or online representations may vary from actual material colors. We recommend requesting a free color chip or referring to the Duets color swatch binder to validate material colors.